

DLC6000**>Description**

The **DLC6165/90-M** and the **DLC6065/90-M** CCD contact readers fulfill the most common retail and office automation needs, by offering excellent reading performance and reliability with a low price, representing an ideal entry-level solution for POS applications. The **DLC6165/90-M** guarantees built-in

Data Formatting and Data Editing, allowing the user to shape the collected data according to whatever format is required by the application software. Furthermore, **PUZZLE SOLVER™** technology is capable of collecting partial data from successive scans and combines it to obtain complete information.

>Highlights

- > 65 and 90 mm reading window
- > Complete data formatting and data editing (DLC61xx-M)
- > **PUZZLE SOLVER™** decoding system (DLC61xx-M)
- > Connectivity to IBM 46xx POS cash registers (DLC6065/90-11)
- > Compatible with EAS Systems (DLC6165-M0-EAS)

DLC7070**>Description**

The **DLC7070** offers good performance within the instinctive reading distance (3 to 18 cm), which represents the distance the operator usually holds the reader from the bar code. Combined with its ergonomics and ruggedness, it eases the operator's job considerably. In

addition, the **DLC7072** High Density and the **DLC7075** Extended Range versions are based on Enhanced Multistandard Architecture and have been created to meet specific needs of high density codes and long distance reading.

>Highlights

- > Instinctive reading distance
- > Advanced reading distance technology
- > Multistandard decoder with universal plug-in cables
- > Enhanced Multistandard Architecture (DLC7072/75)

HERON™**>Description**

The new **Heron™** has been specifically designed for small retail POS applications. It is based on the "INSTINCTIVE READING DISTANCE" concept (from near contact to 20 cm). That, combined with the 256 scan/sec, make the **Heron™** the ideal solution for any operation at the

counter, guaranteeing smart and quick checkout. The stand included in the package also allows the reader to be used in a hands-free mode. In this mode, the green spot remains on to show the operator where to position the code under the **Heron™** for quicker and intuitive reading.

>Highlights

- > Stand included in the package
- > Datalogic "Green Spot"
- > RSS symbologies
- > Interface set: RS232, USB,
 - Wedge & Wand (Heron™ D130)
 - RS232 & IBM (Heron™ D110)
 - TTL Laser output (Heron™ D140)

GRYPHON™ Desk**>Description**

Datalogic's retail offer includes the top of the line product **Gryphon™ D**. It provides outstanding performance in terms of reading quickness, decoding capability (270 scans/sec) and reading distance (near contact to 30 cm), making it suitable for various applications. The

"green spot", (Datalogic patent application) produced by the **Gryphon™ D** provides "good reading" feedback directly on the code. Besides the standard models, the **Gryphon™ D200/220** have also been developed to provide decoding of PDF417, as well as traditional bar codes.

>Highlights

- > RSS symbologies
- > PDF417 codes (Gryphon D200)
- > Interface set:
 - RS232, Wedge, Wand, (Gryphon D100/200)
 - RS232, IBM46xx (Gryphon D110)
 - RS232 & USB (Gryphon D120/220)

GRYPHON™ Mobile**>Description**

The **Gryphon™ M** provides especially optimised optics combined with a decode rate of 270 scans/sec, making it very user friendly, intuitive and fast. In addition, the "green spot," produced by the **Gryphon™ M** provides "good reading" feedback directly on the code.

The cordless system offers scalable solutions: Point to point and Multipoint configurations. The **Gryphon™ M** is also 100% compatible with the STAR-System™, the Datalogic RF narrow band solution for mobile applications.

>Highlights

- > 433 Mhz or 910 Mhz radio systems
- > Point to point and Multipoint: up to 16 scanners simultaneously
- > Radio range (over 30 m)
- > 100% compatible with STAR-System™

GRYPHON™ Bluetooth®**>Description**

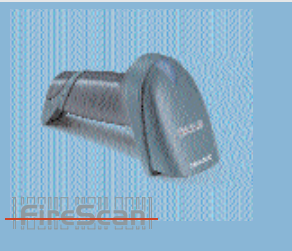
The new **Gryphon™ BT100/200** contains Datalogic's Bluetooth® radio module, compliant to the up-to-date Bluetooth® 1.1 standard. It can communicate (within 10 m) with any PC, Laptop, PDA, mobile phone, printer etc. that includes an embedded Bluetooth® module or an exter-

nal commercial Bluetooth® dongle. The implemented Bluetooth® profile is provided by the SPP=Serial Port Profile: the Bluetooth® device is seen by the host like a virtual COM port. Keyboard Emulation is also available through a custom Datalogic software utility.

>Highlights

- > Bluetooth® 1.1 compliant
- > Package contents:
 - Gryphon™ BT
 - C- Gryphon™ Battery Charger
 - CD-ROM and Quick Reference
- > RSS symbologies
- > PDF417 codes (Gryphon™ BT)

FIRESAN™



>Description

FireScan™ combines ergonomics, ease of use and high performance for any application need. Its Empowered Architecture provides more reliability and a higher first-pass rate, increasing operator productivity. **FireScan™** is based on Enhanced Multistandard

Architecture, which permits flexible connectivity as well as offering **PUZZLE SOLVER™** technology, Data Formatting and Data Editing to customize the reader for different applications.

>Highlights

- > Lightweight and easy to handle
- > Interface set:
 - RS232, USB, Wedge & Wand (FireScan™ D131)
 - RS232 & IBM (FireScan™ D111)
 - TTL Laser output (FireScan™ D141)
- > RSS symbologies

DLL2020/21



>Description

The **DLL2020 DIAMOND™** presentation scanner arrives on the market with the most compact footprint so that it can fit practically anywhere. The ergonomics and ease of use are enhanced by the built-in protection sleeve, which safeguards the unit against shocks and prevents

possible drops from the counter thanks to the Antiskid feature. The omni-directional scan field generates a 16 line scan pattern. The "single line" function represents a distinctive feature of the **DLL2021**: by pressing the button, this omni-directional device becomes a single line scanner.

>Highlights

- > Small footprint
- > Very high "First Pass" rate
- > EAS tag deactivation optional kit
- > Single line option (DLL2021)
- > RS232 and Wedge interfaces

DRAGON™ Desk



>Description

The **Dragon™ D**, based on the same rugged and reliable mechanics of the well established DLL6000 series, has been completely renewed inside. Optical parts completely suspended on shock absorbers and a careful choice of the body materials, protect the **Dragon™ D**

from damage due to "falls." The enhanced architecture, based on a M16 high-speed microprocessor, enables exceptional performance for promptness and reading speed of standard codes, as well as the ability to read poorly printed and damaged codes.

>Highlights

- > 2 meter drop resistance
- > **PUZZLE SOLVER™** Technology™ decoding system
- > 3 optics available: High Performance, High Density and Long Range
- > Man/machine interface: high tone beeper and bright illuminating LEDs

DRAGON™ Mobile



>Description

In all applications where mobility is valued, the **Dragon™ M** represents the key to increase productivity and flexibility in the working area. **Dragon™ M** communicates through a low power, licence free radio in the 433 Mhz band (910 Mhz for USA version) and allows bi-directional communication

between the base station and the host. The **Dragon™ M101/D** also includes a display and a 3 push-button keypad. The cordless system offers scalable solutions: Point to point, Multipoint (up to 32 guns on one base station) and Network (up to 16 bases and 512 guns in automatic roaming).

>Highlights

- > Several models available:
 - With or without display
 - High Performance/Long Range optics system
- > Broad radio range (over 50 m)
- > Protective case and Desk/Wall holder included
- > 100% compatible with STAR-System™

LYNX™ 2D Reader



>Description

Datalogic's latest investment in 2D technology has produced the **Lynx™ D402**, which takes full advantage of the new Datalogic CMOS Imaging Camera. It performs omni directional reading on the most common 1D, stacked and 2D codes. It can also be used for image capture,

enhanced by the new USB interface that speeds up the image's download (less than 1/2 sec. for BMP, 10 mill/sec for JPG format). The "five dot pointer" marks the reading area with four red dots on the corners and one in the middle to make image capture practically intuitive.

>Highlights

- > CCD or CMOS optics available
- > Supports most popular 1D, 2D, RSS, CS and postal codes
- > Image capture
- > Omni-directional scanning
- > Interface: USB, RS232 and Wedge AT IBM all in one
- > Visual Setup™ software tool included in the package

RADIO MODEMS



>Description

The **STAR★Modem™** is an industrial radio modem that enables wireless 433/910MHz RF communication between Datalogic narrow band RF devices and a host system. **STAR★Modem™** makes it possible for any wired RS232 device to become wireless: bar code

printers, industrial scales, industrial scanners can send/receive data like a RF device.

The new **DL Cordless Card™** is a PCMCIA card providing wireless 433MHz RF communication between a laptop or a vehicle mounted terminal and a Datalogic RF device or base station.

>Highlights

- STAR★Modem™ & DLCC**
- > Radio receiver & transmitter
- > Seamless active roaming
- > 100% Compatible with STAR-System™
- STAR★Modem™**
- > Industrial Case IP64
- > High vibration & shock resistance
- > 5 VDC and 10 to 30 VDC

OTHERS



> Pens

The **P51** has been developed to match the demands of virtually all pen reader applications. Whether connected to a portable terminal for use in harsh environments (IP64 protection class), or for operation in office environments, **P51** provides high performance and durability.

> Decoders

The Datalogic offer includes several decoder models. The **DL1000** in particular is a decoder designed to connect to hand-held bar code readers, such as wands, CCD s, slot readers and laser scanners to different PCs, terminals or hosts in both RS232 and Wedge mode.

> Slot Readers

DL52000 is a family of bar code slot readers designed for data collection applications in both commercial and industrial environments. The slot readers are available in both red and infrared versions with single resolution optics designed to read high and low density codes.

DLsM@rtSET™
ENTERPRISE

DLsM@rtSet™
ENTERPRISE

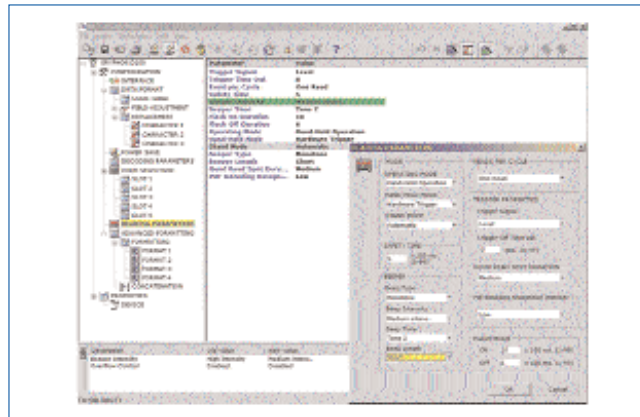
> Description

DLsM@rtSet™ Enterprise is an innovative Datalogic software that revolutionizes product configuration and post-sales support: it provides complete management of Hand-Held Readers: reading parameters, interface set, bar code selection, radio and decoding parameters, advanced formatting and data format, also accessible via Internet or Intranet. **DLsM@rtSet™**

Enterprise offers new and important opportunities, with benefits for both end users and vendors. It improves user knowledge of configuration possibilities for Datalogic readers, and simultaneously helps companies run more efficiently, as a result of the reduction in post-sales activities. The Demo version can be downloaded free of charge from the Datalogic Website.

> Highlights

- > Hand-held reader setup
- > Remote system
- > Firmware download
- > Barcode printing
- > Configuration's copy mode

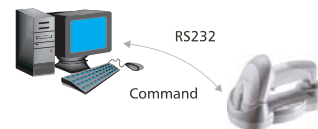


DLsM@rtSet™ Enterprise is supported by an easy-to-use graphic interface, based on Windows standards: the Tree View on the left side of the screen lists all the configurable parameters which are seen on the right side. The action log has an Undo function, so any configuration mistake can be deleted. Furthermore, with **DLsM@rtSet™ Enterprise** it is possible to view all the parameters that have been changed, so that you can recognize them instantly. All these characteristics make this program intuitive and instinctive.

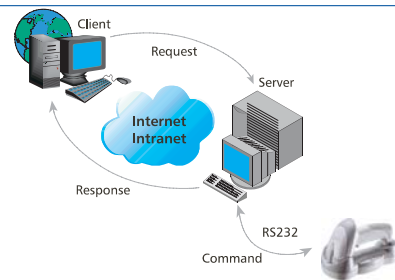
DLsM@rtSet™ Enterprise has two different communication modes which configure a device:

- > **Local Communication:** sets a device connected to a local PC via a RS232 interface.
- > **Remote Communication:** provides online device set-up by connecting a Server PC and Client PC based on Internet (modem or proxy) or Intranet. In addition, during remote communication, a chat-line can be activated between the Server PC and Client PC to send messages to the remote operator as well as commands directly to the device.

Local communication



Remote communication



Corporate Headquarters
Tel. +39 051/3147011
Fax +39 051/726562
info@datalogic.com

Sales International (Central and South America, Far East, Middle East / Africa)
Tel. +39 041/5986511
Fax +39 041/5986550
sales-intl@datalogic.com

www.datalogic.com



Australia
Tel. +61 3/95589299
Fax +61 3/95589233
info@au.datalogic.com

Austria
Tel. +43 2236/258820
Fax +43 2236/258825
info@at.datalogic.com

Denmark
Tel. +45 70/239970
Fax +45 70/239972
info@dk.datalogic.com

France
Tel. +33 1/60921111
Fax +33 1/60921340
info@fr.datalogic.com

Germany
Tel. +49 7026/6080
Fax +49 7026/5746
info@de.datalogic.com

Italy
Tel. +39 051/3147011
Fax +39 051/3147170
sales@it.datalogic.com

Japan
Tel. +81 78/3033400
Fax +81 78/3033402
idlmarke@zumi-datalogic.co.jp

Netherlands
Tel. +31 346/572888
Fax +31 346/568736
info@nl.datalogic.com

Spain
Tel. +34 91/3837755
Fax +34 91/3837962
info@es.datalogic.com

Sweden
Tel. +46 40/385000
Fax +46 40/385001
info@se.datalogic.com

United Kingdom
Tel. +44 1582/464900
Fax +44 1582/464999
info@uk.datalogic.com

USA
Tel. +1 859/6897000
Fax +1 859/3344970
info@us.datalogic.com

